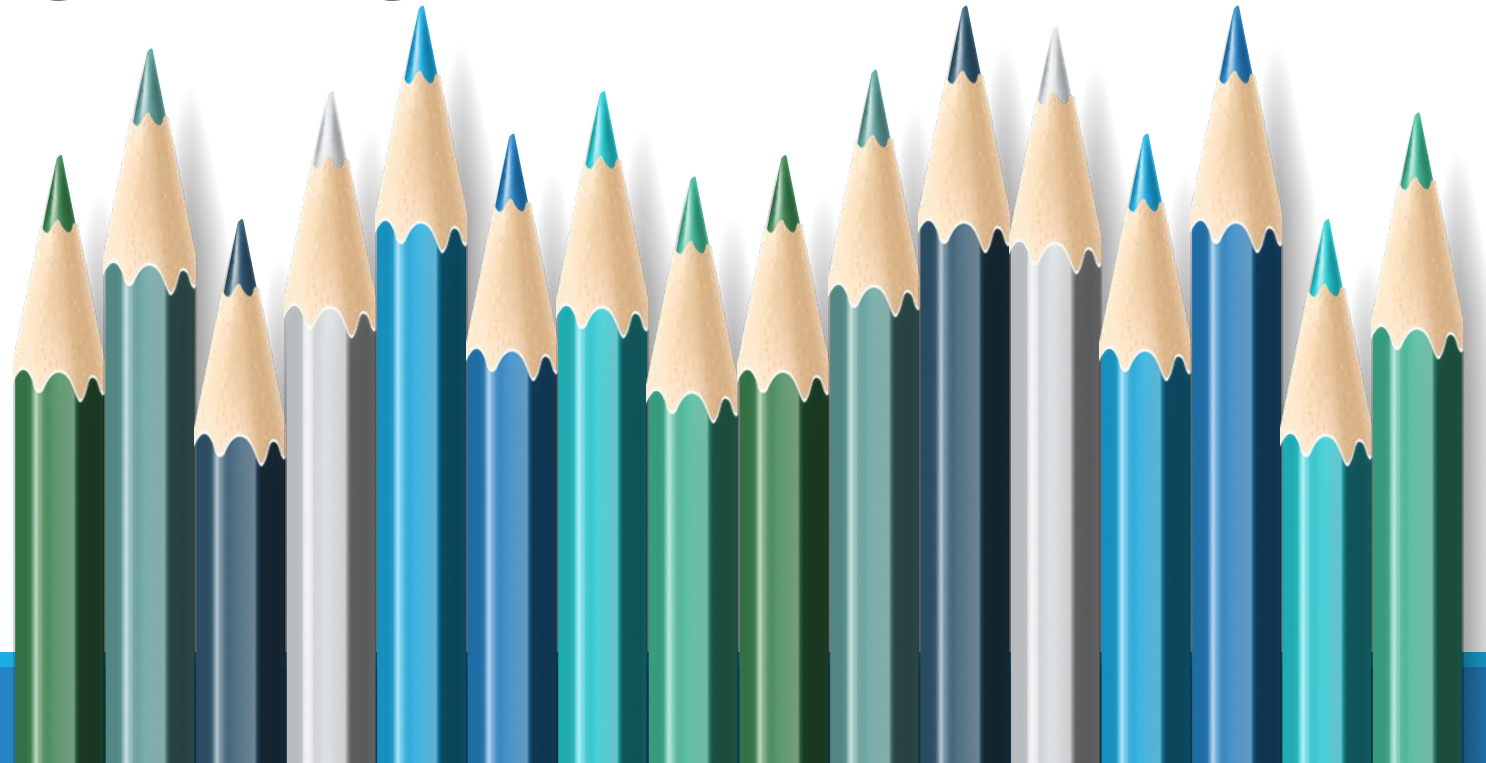


St. Helena Unified School District

Survey Data on Instructional Plan



PARENT SURVEY - OVERVIEW

Distribution

- Collection Window: Monday, June 1, 2020 (11:00 a.m.) through Friday, June 5, 2020 (4:00 p.m.)
- Survey sent by email and via text to all current parents on June 1, 2020 and a reminder text sent Thursday, June 4, 2020
- Links to survey were placed on the district and school sites homepage

Responses

- English: 551 Spanish: 140

PARENT SURVEY DATA

Which school site(s) does your child (or children) attend?

Answer Choices*	English Response	Spanish Response
St. Helena Primary School	165	49
St. Helena Elementary School	162	42
Robert Louis Stevenson Middle School	159	58
St. Helena High School	239	61

*May choose more than one school

PARENT SURVEY DATA

How comfortable are you sending your child back to school in the fall with accommodations as directed by the Department of Public Health (such as face masks, social distancing, frequent hand washing)?

Answer Choices	Total Responses	Percentage
Very Comfortable	215	31.11%
Comfortable	163	23.59%
Neutral	154	22.29%
Not Comfortable	107	15.48%
Very Uncomfortable	50	7.24%
Skipped Question	2	.29%

PARENT SURVEY DATA

If we had to choose a schedule today for opening school in the fall, which of these options would be your preference?

Answer Choices	Total Responses	Percentage
Partial day school every day in person/ partial day distance learning	79	11.43%
2-3 full school days in person/ 2-3 days distance learning	179	25.91%
Daily school with appropriate health and safety guidelines from Department of Public Health	341	49.36%
100% Distance Learning Online	65	9.41%
I will not send my child to school at this time	24	3.47%
Skipped Question	3	.43%

PARENT SURVEY DATA

How much time do you think your child should be on a computer in an Online Distance Learning Model or Hybrid model per day?

Answer Choices	Total Responses	Percentage
Less than an hour	104	15.05%
1-2 hours	289	41.82%
2-3 hours	190	27.50%
3-4 hours	105	15.20%
Skipped Question	3	.43%